

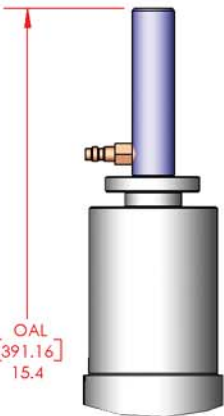
Fail-safe, spring force expanded grippers  
 Aluminum body, clear hardcoat anodized  
 Lightweight design, approx. {8 lb. (3.6 Kg)}  
 Dimensions subject to change  
 \* Custom configurations available

### RETRACTION METHODS



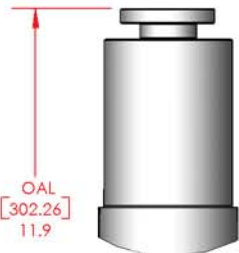
**"T-Handle"**

Most common machines:  
 (MRT, HRL, VRL)



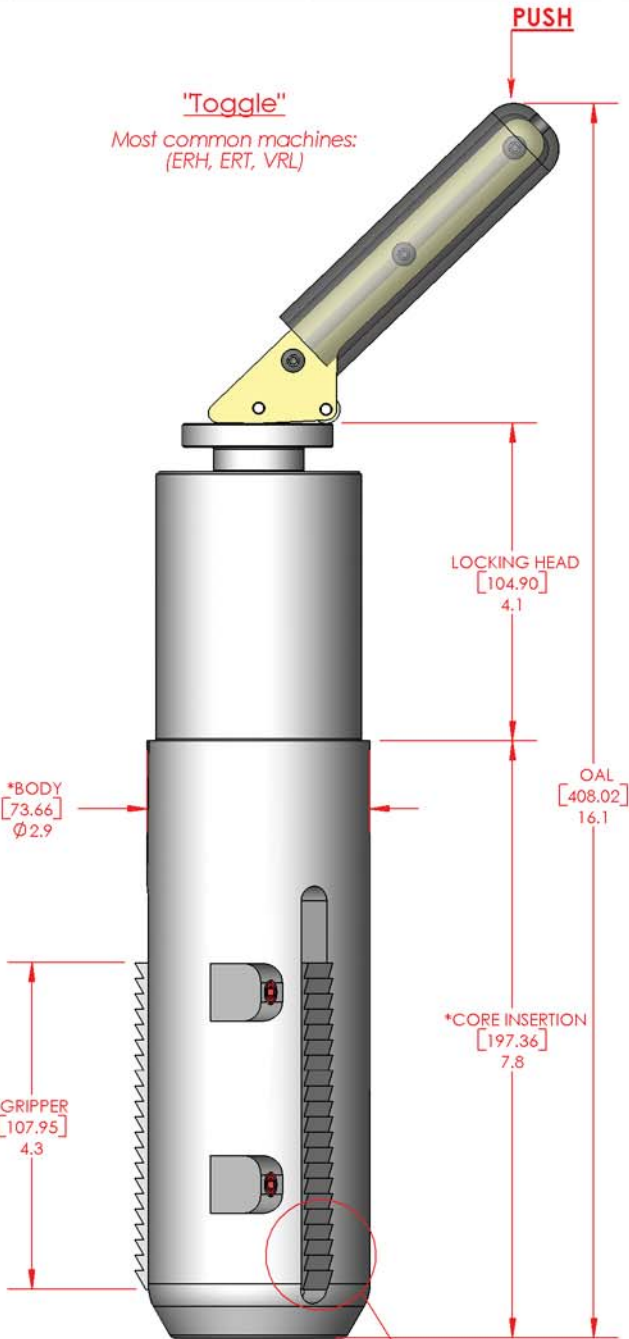
**"Pneumatic"**

Most common machines:  
 (MRT, HRL, VRL, ERT)  
 Continuous air supply present (50 psi min.)  
 Pneumatic Retract Kit Sold Separately



**"Remote"**

Most common machines:  
 (ERH, ERT)  
 Electric Remote Retract (24VDC, 110VAC)  
 or  
 Manual Remote Retract (Cable & Hand Lever)  
 Remote Retract Kits Sold Separately



**"Toggle"**  
 Most common machines:  
 (ERH, ERT, VRL)

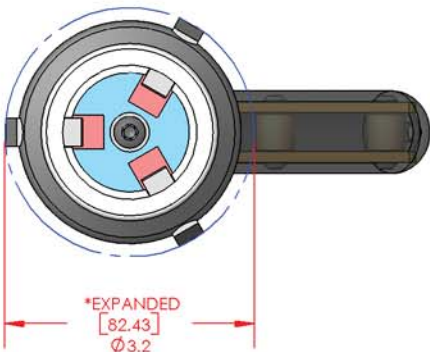
LOCKING HEAD  
 [104.90]  
 4.1

\*BODY  
 [73.66]  
 Ø 2.9

GRIPPER  
 [107.95]  
 4.3

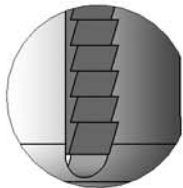
\*CORE INSERTION  
 [197.36]  
 7.8

GRIPPER PROFILE



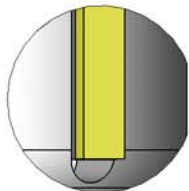
\*EXPANDED  
 [82.43]  
 Ø 3.2

### GRIPPER PROFILES



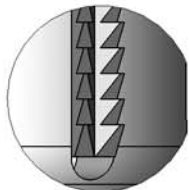
**"Standard"**

Cardboard cores  
 Most common applications



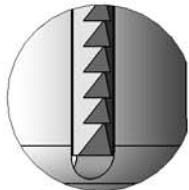
**"Urethane"**

Steel, Aluminum Cores  
 Non-marking 60-70 shore A



**"Shark Tooth"**

PVC, Hard Cardboard Cores  
 Double Edge Contact



**"Piranha Tooth"**

PVC, Hard Cardboard Cores  
 Single Edge Contact -High Wear