

**GORBEL**  
A CLASS ABOVE

[www.gorbel.com](http://www.gorbel.com)



# CRANES

**PIVOT PRO ARTICULATING JIB CRANE**

**CAPACITIES:** Up to 150 lbs

**MOUNTING STYLE:** Free Standing & Wall Mount

## Material Handling Solutions For Your Unique Applications

Since 1977, Gorbels has been an innovator and leader of lifting loads in a work cell.

Today, our product line has grown to include many configurations of Gantry, Jib and Work Station Cranes, our G-Force® and Easy Arm™ Intelligent Lifting Devices, and our Cleveland Tramrail™ line of patented track crane systems.

We have the solutions to solve almost any work cell lifting application. We are dedicated to continually increasing our product quality and customer service standards to exceed our customers' positive expectations.

Gorbels takes pride in on-time, error-free shipments as well as the industry's best product warranty— 5 years on most products.

## Easy Movement for Increased Productivity and Safety

The PIVOT PRO™ is a sleek new addition to the Gorbels® line of jib cranes. The PIVOT PRO™ is an articulating jib that is specifically designed for applications under 150 lbs. Its smaller capacity allows it to have a lighter, less bulky design, so it's easy to move. This reduces lessens physical stress on workers, reduces employee injuries, and leads to increased efficiency.

### Ergonomic Design

The PIVOT PRO™ can help you position loads in places you cannot reach with traditional jibs. It provides easy rotation and consistent responsiveness when positioning loads throughout the crane's coverage area. Our Free Standing PIVOT PRO™ is capable of 360° non-continuous coverage around the mast, with the secondary arm covering 300°. The Wall Mounted model is capable of 200° rotation on the boom and 300° rotation with the secondary arm.

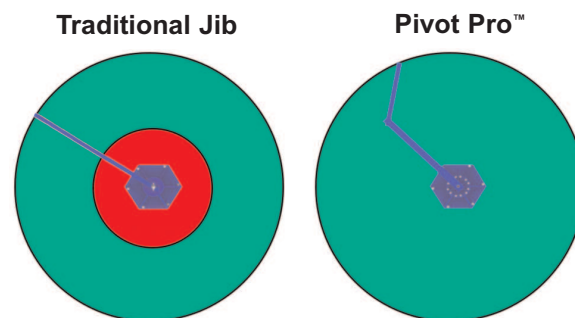
### Less Effort Needed to Start and Stop the Boom

Gorbels's PIVOT PRO™ provides a rapid return on investment through increased productivity, reduced injuries, and improved safety. Increases in production result from the easy rotation of the boom and quick, precise load positioning. The force required to start and stop the boom rotation is so much less than with other cranes that it reduces injury and improves safety.

When you choose the PIVOT PRO™, you get a quality ergonomic product, a delivery date you can plan on, and the industry's best warranty.

### Easy Movement

Traditional jib cranes can be difficult to rotate when the load is on the inner half of the boom. The PIVOT PRO™ is easier to rotate in close to the free standing mast or building column (**Figure 1**).



**Figure 1**  
With Gorbels's PIVOT PRO™, you can move loads closer to the jib mast with greater ease than is possible with traditional jib cranes.

### Ideal for Many Applications

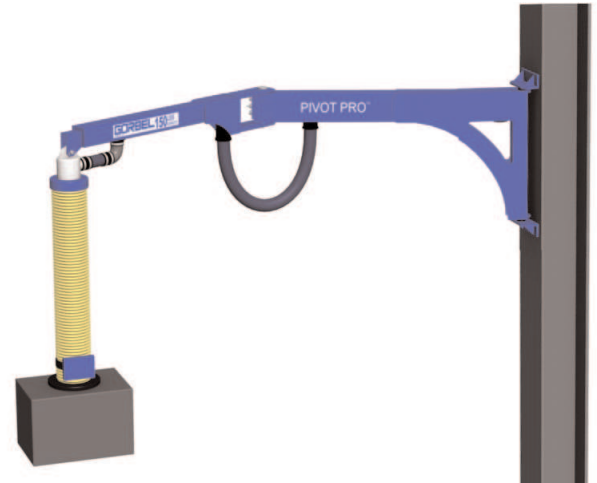
- General palletizing
- Distribution Centers
- Food & Beverage
- Packaging & Printing
- Production
- Automotive
- Glass & Ceramics Handling
- Woodworking

## Wall Mounted PIVOT PRO™

CAPACITY	SPAN (ft)	MODEL NUMBER	SHIPPING WEIGHT	THRUST & PULL
50#	8'	PPRO-WM-50-8-T*	163#	584#
	10'	PPRO-WM-50-10-T*	181#	756#
	12'	PPRO-WM-50-12-T*	200#	941#
75#	8'	PPRO-WM-75-8-T*	163#	717#
	10'	PPRO-WM-75-10-T*	181#	921#
	12'	PPRO-WM-75-12-T*	200#	1139#
100#	8'	PPRO-WM-100-8-T*	163#	849#
	10'	PPRO-WM-100-10-T*	181#	1086#
	12'	PPRO-WM-100-12-T*	200#	1337#
150#	8'	PPRO-WM-150-8-T*	163#	1114#
	10'	PPRO-WM-150-10-T*	181#	1417#
	12'	PPRO-WM-150-12-T*	200#	1732#

\* The "T" in the model number denotes vacuum hose at TOP of boom connection. Substitute a "B" in its place for the hose at the BOTTOM of boom connection.

**Includes:** Jib boom, jib arm, pivot assemblies, friction brakes, vacuum hose between boom and arm, hose fittings and mounting assembly (5/8" mounting hardware by others).

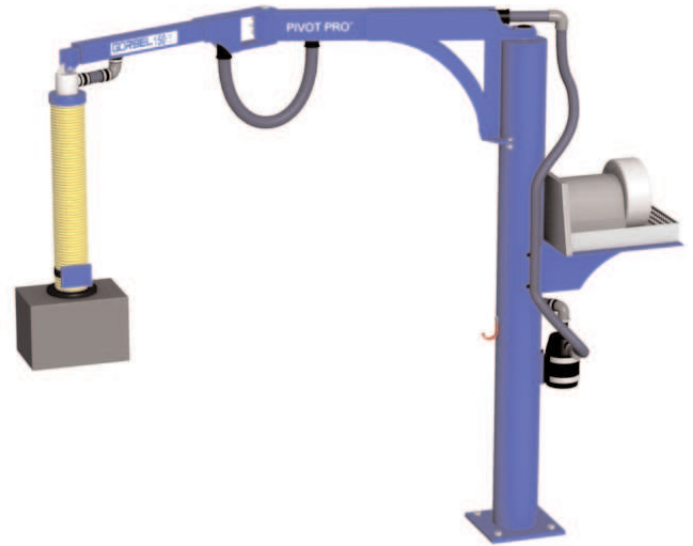


## Free Standing PIVOT PRO™

CAPACITY	HUB	SPAN (ft)	MODEL NUMBER	ANCHOR BOLT LOAD
50#	10'	8'	PPRO-FS-50-10-8-T*	528#
		10'	PPRO-FS-50-10-10-T*	720#
		12'	PPRO-FS-50-10-12-T*	927#
	12'	8'	PPRO-FS-50-12-8-T*	517#
		10'	PPRO-FS-50-12-10-T*	709#
		12'	PPRO-FS-50-12-12-T*	916#
75#	10'	8'	PPRO-FS-75-10-8-T*	668#
		10'	PPRO-FS-75-10-10-T*	897#
		12'	PPRO-FS-75-10-12-T*	1142#
	12'	8'	PPRO-FS-75-12-8-T*	656#
		10'	PPRO-FS-75-12-10-T*	886#
		12'	PPRO-FS-75-12-12-T*	1131#
100#	10'	8'	PPRO-FS-100-10-8-T*	807#
		10'	PPRO-FS-100-10-10-T*	1074#
		12'	PPRO-FS-100-10-12-T*	1356#
	12'	8'	PPRO-FS-100-12-8-T*	796#
		10'	PPRO-FS-100-12-10-T*	1063#
		12'	PPRO-FS-100-12-12-T*	1345#
150#	10'	8'	PPRO-FS-150-10-8-T*	1086#
		10'	PPRO-FS-150-10-10-T*	1428#
		12'	PPRO-FS-150-10-12-T*	1785#
	12'	8'	PPRO-FS-150-12-8-T*	1075#
		10'	PPRO-FS-150-12-10-T*	1417#
		12'	PPRO-FS-150-12-12-T*	1774#

\* The "T" in the model number denotes vacuum hose at TOP of boom connection. Substitute a "B" in its place for the hose at the BACK of boom connection.

**Includes:** Jib boom, jib arm, pivot assemblies, friction brakes, free standing mast, vacuum hose between boom and arm, hose fittings, rotations stops, and mounting assembly (3/4" anchor bolts by others).

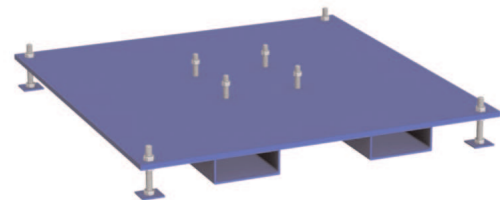


## Optional Portable Base

Spans	Capacities & Model Numbers			
	50#	75#	100#	150#
8'	PB-48-10	PB-48-10	PB-48-12	PB-54-12
10'	PB-48-10	PB-48-12	PB-54-12	PB-60-12
12'	PB-48-12	PB-48-12	PB-60-12	PB-60-15

**Includes:** Fork pockets, leveling feet, and mast mounting hardware

Fork truck dimensions = 7-1/4" inside width, 3-1/2" inside depth, and 20-1/2" from pocket centerline to centerline



## PIVOT PRO™ In Action



### BUSINESS

Pump Manufacturer

### APPLICATION

Finished goods are moved through packaging lines, where they are prepared for shipping. The loaded boxes weigh between 85 and 100 pounds and come into the work cell on a conveyor so that the operators can palletize them.

### WHY PIVOT PRO™?

The PIVOT PRO™ makes the palletizing less strenuous for workers. They are able to move the boxes with less effort because they are not moving the entire length of a jib crane boom.

The PIVOT PRO™ also reduced the need for maintenance versus the previous vacuum lifter, which often saw cuts and tears along the vacuum tube. After using the PIVOT PRO™ on this application, the company purchased an additional unit for a machining operation in another area of the facility.

### RESULTS

*“Our operators have been very pleased with how helpful this product has been. The PIVOT PRO™ makes manipulating the packages for palletizing so much easier. You don’t have a lot of resistance from the boom to contend with when trying to place an object.”* - Industrial Engineer for pump manufacturer

# Features & Benefits

## Sealed Tubes (1)

Our sealed tubes eliminate the need for festooning in vacuum applications. No more festoon pile-up, plus you get greater travel and minimize the potential for reduced vacuum suction caused by kinked hoses.

## Articulating Boom Design (2)

- Moves up to 3 times easier than a work station jib
- Lighter weight makes positioning loads easier
- Easier movement of loads close to the mast
- Safer operation by reducing the “whip” of the boom in high cycle applications
- Less boom “whip” reduces the wear and tear on vacuum lift tubes

## Rotation Limits For Primary Arm (3)

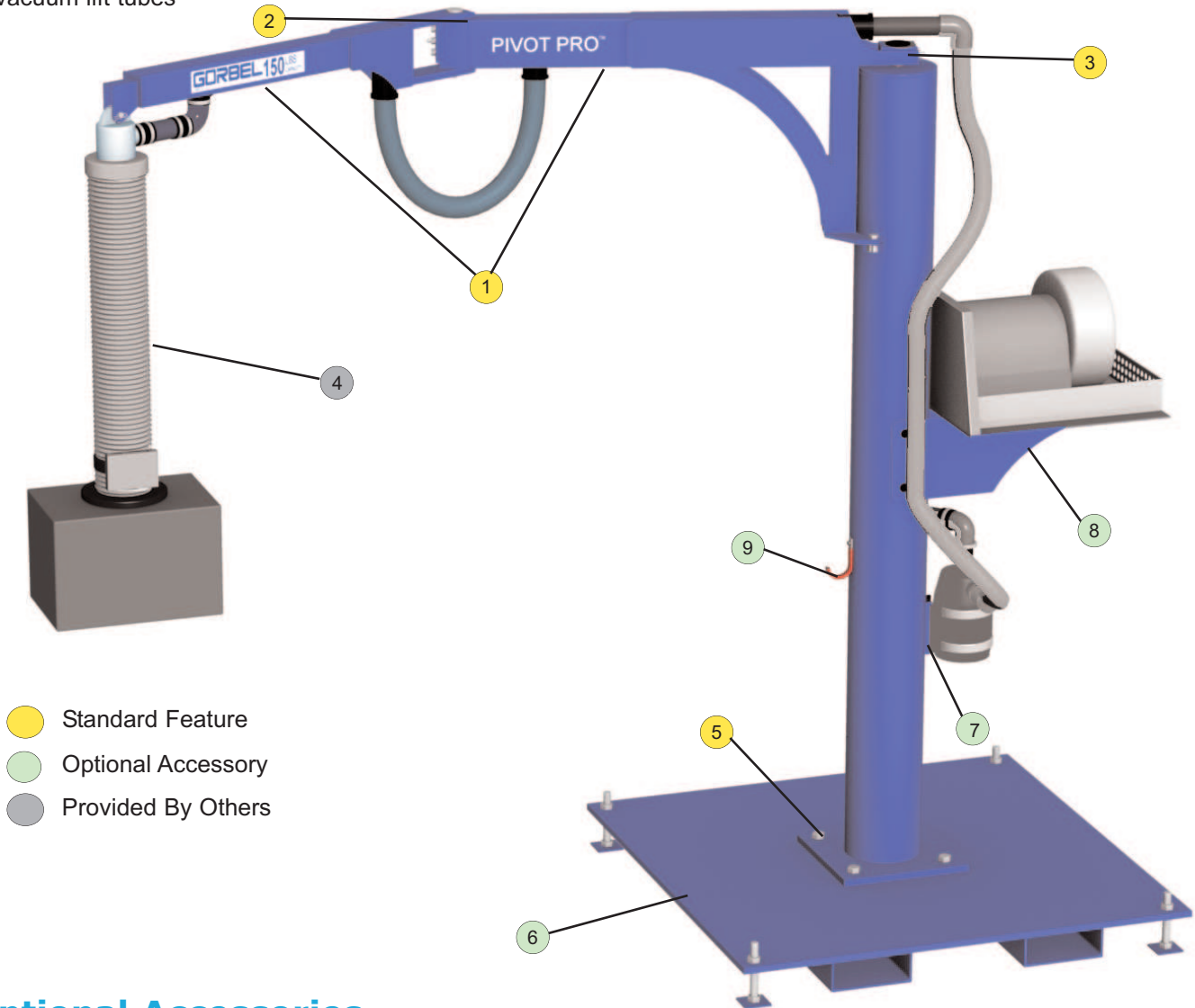
The PIVOT PRO™ has multiple rotation stop locations so you can tailor the coverage area to your needs.

## Compatible With All Major OEM Tube Lifters (4)

Gorbel's PIVOT PRO™ has been designed to be used with all major OEM manufacturers' vacuum tube lifters. *(Note - Vacuum tube lifters by others.)*

## No Foundation Required (5)

The PIVOT PRO™ can bolt to any 6" floor. You can also choose our optional portable base, which has fork pockets to accommodate a fork truck or a pallet jack.



- Standard Feature
- Optional Accessory
- Provided By Others

## Optional Accessories

### Portable Base (6)

Use the PIVOT PRO™ throughout your plant when you choose our portable base. It's designed to accommodate small fork trucks and pallet jacks, and even comes with leveling feet. The base is sized for the capacity of the PIVOT PRO™.

### Filter Bracket (7)

You can also choose to have us provide a filter bracket, and specify where on the PIVOT PRO™ you want it placed.

### Vacuum Pump Platform (8)

We can also provide a platform that accommodates all the major OEM manufacturers' pumps. You specify where on the PIVOT PRO™ mast you want the platform located.

### Smart Hook (9)

When the PIVOT PRO™ is not being used, this hook will keep your handle or end effector off the floor.

**FOR MORE INFORMATION**

Your authorized Gorbel dealer can give you more information on what makes Gorbel's Ergonomic Work Station Cranes and other material handling products "A Class Above."

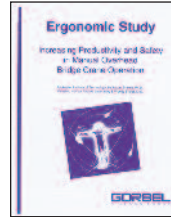
**BRIDGE CRANES**



FREE STANDING

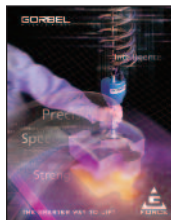


CEILING MOUNTED



ERGONOMIC STUDY

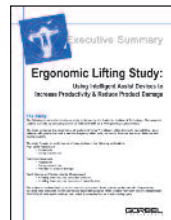
**ERGONOMIC LIFTING**



G-FORCE™



EASY ARM™



ERGONOMIC STUDY

**JIB CRANES**



JIB CRANES



GANTRY CRANES



WORK STATION JIBS



ARTICULATING JIBS

**SPECIALTY PRODUCTS**



SEISMIC ZONE IV



TELESCOPING



TRACTOR DRIVES



INTERLOCK/TRANSFER

**GORBEL**  
A CLASS ABOVE

[www.gorbels.com](http://www.gorbels.com)

GORBEL  
600 Fishers Run  
PO Box 593  
Fishers, NY 14453 USA

T 800.821.0086  
T 585.924.6262  
F 585.924.6273  
E [info@gorbel.com](mailto:info@gorbel.com)

CRANES